

LE FRENCH CRAFTER

Dear fellow crafter,

Thank you for downloading this template!

For this build, I recommend using 0,8mm to 1,2mm thick vegetable tanned leather for this stitching iron sheath.

Before starting:

Make sure you print PDF file on A4 paper at 100% scale (check your printer settings) to ensure that your print will be at the original scale of the document - reference this with the Print Guide below.

Make sure to only print the second page to reduce paper use :)

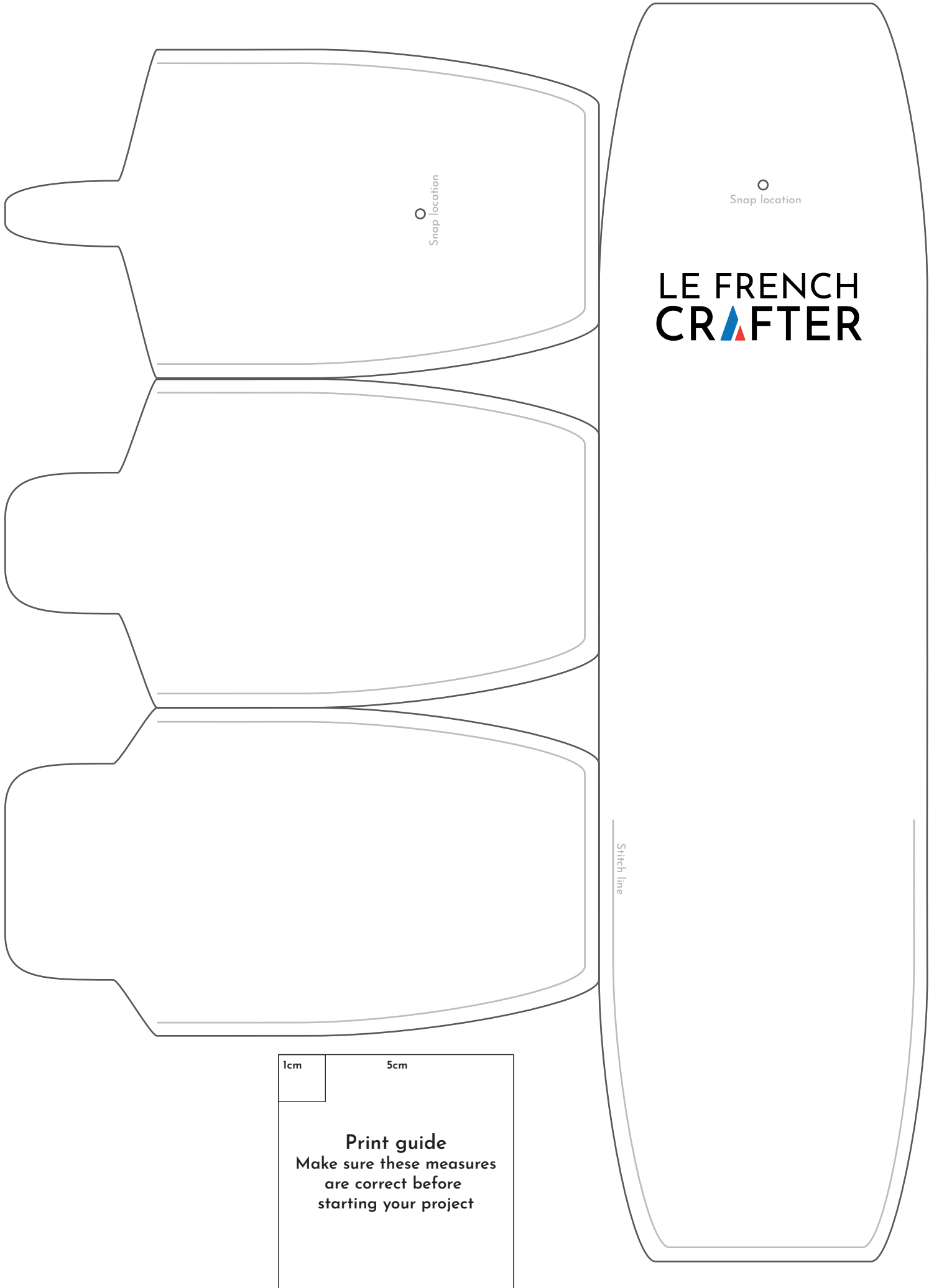
Feel free to adapt the build depending on your needs and preferences. You may want to wet the sheath with water or neatsfoot oil to help adapt it (stretch it) to your set of pricking irons.

Please note that this template is for personal use only and may be used for as many projects as you wish. Please do not share or sell these templates or items made using it.

Thank you and happy crafting!

James Berry





○
Snap location

○
Snap location

LE FRENCH
CRAFTER

Stitch line

1cm

5cm

Print guide
Make sure these measures
are correct before
starting your project